

urban access solutions

info@urbanaccesssolutions.com, www.urbanaccesssolutions.ca



Tactile indicators - top of stair landings

For use at public step off locations such as platform edges stair landings and ramps

Suitable for indoor or outdoor applications where tactile warning (TWS) is required. True flexibility when design and functionality meet.

Available in:

- Stainless Steel 316 Grade
- Aluminum - anodized colour coated
- Stainless with carborundum insert
- Polymers - black, yellow, grey, other colours available

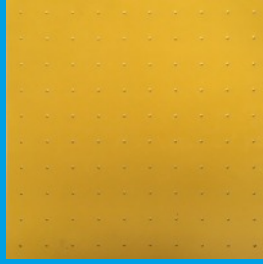
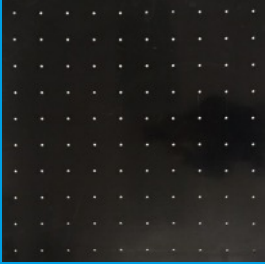
Domes comply with CSA, AODA, ADA, ISO guidelines and specifications.

Tested in accordance with:

- ASTM C1028 Static coefficient of friction, 1.0 dry 0.8 wet
- ASTM B 117-03 fog and salt spray (200 hours) - no change
- ASTM HS20-44 load test 10400lb - no change

Optional

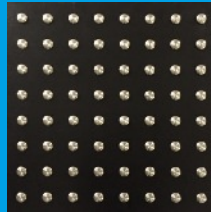
Tactile rubber contrast backing from Johnsonite



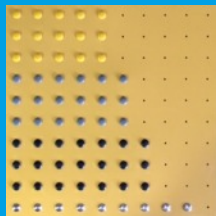
24" x 24" predrilled rubber mat at 60mm c/c spacing per CSA.



Add UAS-PX2315 polymer tactile indicators. Shown here with black on black or use with Stainless Steel indicator for superior contrast

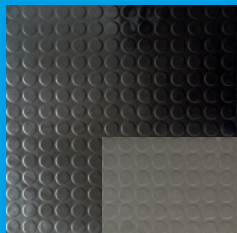


Or use contrasting Yellow on Black, Black on Yellow, Grey etc. Additional colours are available

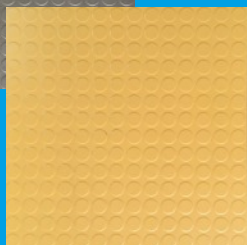
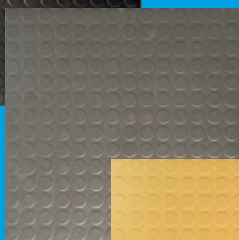


Trim out landing in tile or carpet tile field using Tredsafe DT040 Aluminum edge trim

Optional Tactile mats from Nora Tile and Johnsonite



18" x 18" Norament rubber tactile
Black, grey and Yellow. Other colours
Available. Review details click here
www.nora.com/us/products/flooring/norament/



Johnsonite tactile mat. Available in 300mm wide strips
cut to length or sold by roll, black only

Trim out landing in tile or carpet tile field using Tredsafe DT040
Aluminum edge trim